

GIVE YOUR

# Sales

A LIFT!

GLASS FRONT VENDER BY MAYTAG



MANUFACTURED BY **Dixie-Narco**

# Glass Front Vender

BY MAYTAG

Now you can **MAXIMIZE** sales and profitability with a new vending machine available exclusively to Coca-Cola bottlers. The new Glass Front Vender by Maytag allows customers to view and select from an extensive array of Coca-Cola products. An **ELEVATOR ARM** delivers the selected product via a conveyor, reducing product foaming from a free fall. Product configuration allows for maximized space to sales. In addition, the self-contained refrigeration unit can be **EASILY ACCESSED** for service. And loading and unloading are **SIMPLE** — allowing for greater efficiency in the field.

**FOR MORE INFORMATION** on the new Glass Front Vender by Maytag, visit our Web site at **WWW.GFV.MAYTAG.COM** or call us at **800-688-9090**.

## FEATURES

- Unique elevator and conveyor for product delivery
- Five delivery trays with nine columns
- Displays up to 45 products
- Variable package type — glass bottles, cans, PET bottles (8-, 10-, 12-, 16- and 20-oz. sizes)
- Fits 20-oz. sport-top PET
- Internal power supply provides 24 VAC to MDB coin mechanism and bill validator
- Compressor and system are full hermetic construction for long service life
- Uses non-CFC R134A refrigerant
- KO controller technology controls all machine functions
- Self-contained refrigeration system
- Internal storage area and loading rack

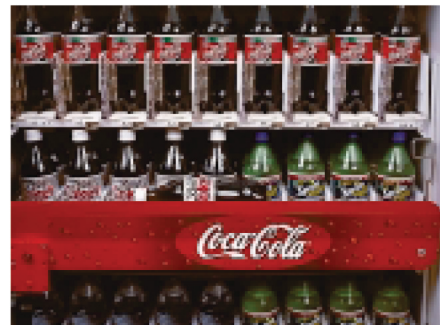


P.O. DRAWER 719, WILLISTON, SC 29853-0719  
800-688-9090 · 803-266-5000 · FAX: 803-266-5150

MANUFACTURED BY **Dixie-Narco**

NOTE: Specifications subject to change.

©The Coca-Cola Company, "Coca-Cola," "Coke" and the Dynamic Ribbon are trademarks of The Coca-Cola Company.



EXCLUSIVE ELEVATOR ARM FOR PRODUCT DELIVERY

## SPECIFICATIONS

### Capacity:

45 product selections  
(five trays with nine selections per tray)

360 16-/20-oz. PET

450 12-oz. cans

### Dimensions:

72" high x 52" wide x 35" deep

### Approximate Weight:

749 lbs. (empty)

### Power:

120 VAC, 60 Hz, 12 amps